

It's Time Travel Time!

HISTORY



① ② ③

TAKE TO THE NATURE CENTRE TO
BE STAMPED WHEN EACH LEVEL
IS COMPLETED

Can you imagine the Presqu'île peninsula without a park? The Park wasn't always here! At one time, there were farms, a hotel and a golf course. The golf course was located on the Pannes and has completely disappeared without a trace. Search for Presqu'île's mysterious past by visiting the sites marked on the map on this book's back cover. Another place to learn about local history is the Proctor House Museum in Brighton.

Level 1 The Speedy

Site H1

A plaque about the shipwreck of the Speedy can be found near the Lighthouse.

Read the plaque. List the names of 2 people on board the ship:

1)

2)

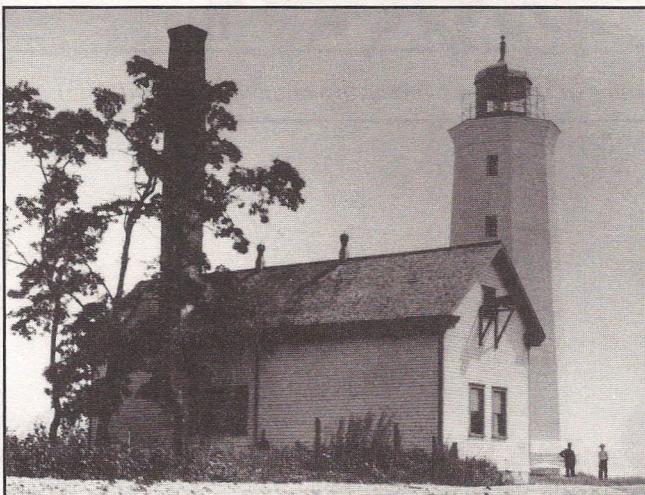
The Lighthouse

Site H2

After the sinking of the Speedy it was decided that a lighthouse should be built on Presqu'île Point. The Lighthouse would help guide ships to Presqu'île's sheltered harbour and warn sailors to "steer clear of Prince Edward County".

It's a wonder that the lighthouse is still standing since it wasn't built very well back in 1840. The builders used cheap local limestone instead of bringing quality limestone from Kingston. It crumbled so much that they had to cover it with the wooden shingles that you can see today. The thick walls were supposed to be held together with strong quarry sand and cement. Again, the contractor tried to save money by using sand from Presqu'île's beach. Grains of sand from the beach are round because of the rolling of waves. This beach sand rolled down from the walls and filled up the basement! To get to the top, the lighthouse keepers had to climb up 80 ladder-like steps.

Complete the Lighthouse picture opposite by drawing in the windows and door.



Level 2 The Foghouse Site H3

A light is useful to warn ships away in the dark but even a bright light is difficult to see in the fog. On the path between the Lighthouse and the Lighthouse Interpretive Centre you can see the foundations of the old foghorn house. It was built in 1906. It was a large building because a lot of space was needed for the machinery that produced a 6 second sound blast every minute. On the foundation is a metal disk called a bench mark. This is used for making maps. Read the bench mark and write down what it says:

The Hotel and Docks Site H4

The government dock may seem pretty deserted now but there was a time when it was one of the busiest places on Lake Ontario! To get to the dock, follow the residential road, Bayshore Road for about 5 km from the Campground Office. Next door to the dock stood the Presqu'ile Hotel and Dance Pavilion. People would travel for miles to come to the Pavilion where they saw the best bands and entertainment of the day. Along with dancing and horseback riding the hotel hosted boat races from Rochester, New York (across the lake). Although the hotel was closed and torn down the dock is still in use today. **Measure the width of the dock. Use the length of this book as your measuring tool. How many book lengths did it take to measure the width of the dock?**

_____ books

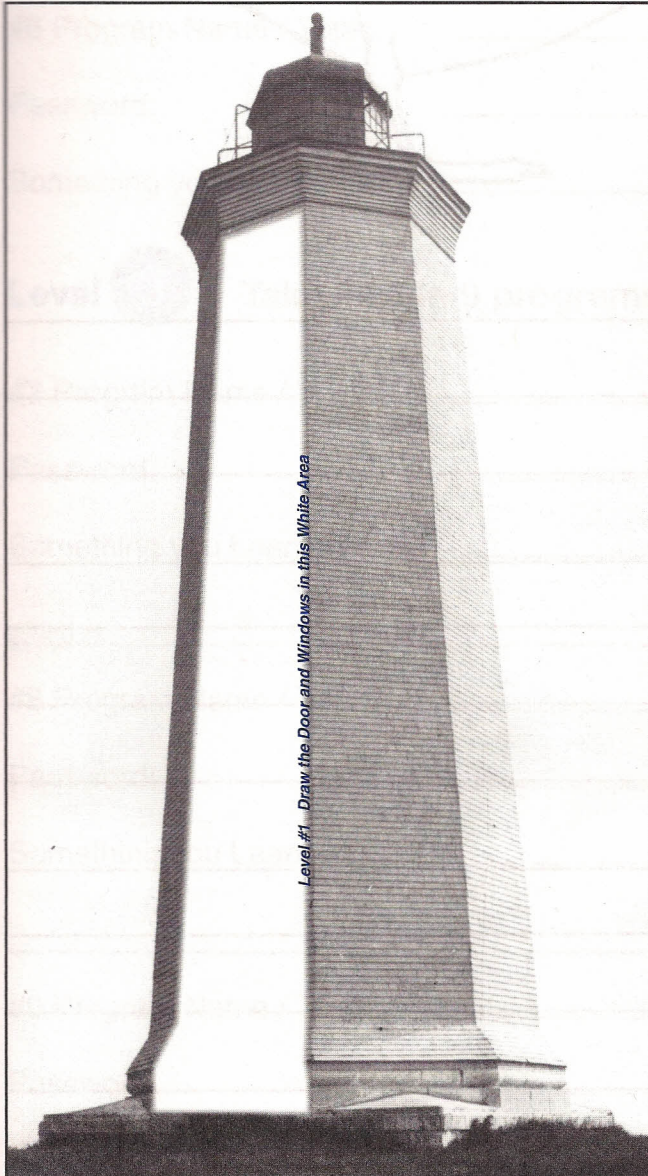
Level

3 Old Farms and Cottages

Site H5

Ever wonder why we have places in the park called Calf Pasture and Jobes' Woods Trail? These names are from the days when farming was important at Presqu'ile. There once was a pasture for cattle grazing and Ezekial Jobe was an early farmer. The old fields are overgrown now but you can still see signs of an old fence lying in an abandoned hedgerow along the Jobes' Woods Trail.

What was the fence made of?



Level #1 Draw the Door and Windows in this White Area

Cottages

Site H6

Cottaging at Presqu'ile became very popular in the early 1900's and it still continues outside the park on Bayshore Road. A few cottages remain in the park along Lighthouse Lane and are used as staff buildings and offices. Stonehedge was built in the 1940's by the Toronto harbour master and used as a summer home. **What family name is written on the plaque by the gate?**

A Provincial Park

In 1954 a new era started at Presqu'ile when it became a Provincial Park. The four most important goals of a Provincial Park are:

1. to protect nature and cultural heritage
2. to promote appreciation of nature and cultural heritage
3. to give people the chance to enjoy the outdoors
4. to promote tourism in Ontario.

3

Read the Park Tabloid newspaper and copy out the one basic rule in Ontario Provincial Parks: